

MODOT NORTHEAST DISTRICT – NEW FLORENCE MAINTENANCE FACILITY 4" WATER METER INSTALLATION – SCOPE OF WORK

The MoDOT Northeast District is seeking a qualified Contractor to furnish and install a four-inch water meter and all necessary components for a complete and functional system at the New Florence Maintenance facility. All work will be located and performed at 540 Tree Farm Road, New Florence, MO 63363 in Montgomery County. All work will be required to be coordinated with the City of New Florence Utilities Department at 573- 835-2106 and with the MoDOT Northeast District Facilities Department at 573-719-7397.

The Contractor shall connect a 4" water line to an existing 6" water main. The 4" line shall be installed with a new water meter and service vault. The distance between the 6" main and service meter vault is approximately 30'. There shall be a curb stop valve and curb stop valve box installed between the 6" main and the service meter vault. The valve box shall be at grade height. The Contractor shall install a tracer wire between the curb stop valve and the service vault.

The service meter vault shall contain a 4" gate valve before and after the meter. A 2" meter bypass will be installed with a gate valve. The water meter shall be a 4" NEPTUNE MACH 10 Ultrasonic w/test port, integrated R900I radio read register w/6' antennae EU3L2G1SG89 20" lay length. [The City of New Florence Utilities Department requires this is only brand/type of water meter that will be accepted. No substitutions.] All piping and related components in the service vault shall be ductile material or stainless steel. No PVC piping shall be allowed in service meter vault.

The service vault shall be of sufficient length and width to accommodate installation and future service of all components contained. The vault must not hold water. The vault shall have a removable lid opening, not cast into concrete (or other types of vault material). The lid opening shall be centered over the meter itself. The size of vault must allow for a minimum of 12" clearance on all sides from the wall, floor and ceiling to any fitting. The meter face must be between 30" and 42" below grade. The Contractor is responsible for installing waterstop and grouting for all extrusions and groundwater entry at seams. The vault excavation shall be backfilled and set on a bed of 1" clean type rock. The vault lid shall be non-traffic design with a padlock service device. The lid shall be a minimum size of 44" wide x 40" length and be of a "clamshell" style design. The vault shall have interior steps at least 16" wide and spaced no more than 12" apart.

All 4" water line connected to the 6" main shall be of DR18 C900 gasketed pipe or a type that meets/exceeds DR18 C900 specifications. The Contractor shall provide a 12" (in length) capped 4" stub on exterior of vault for future connection. The Contractor shall coordinate the connection to the 6" main with City of New Florence for correct connection procedures and pressure testing of all installed components.

The Contractor must guarantee all work and materials for a period of one year from installation date. The Contractor is required to perform a minimum of 10% of work and will provide a list of subcontractors to MoDOT. The Contractor shall submit a materials list for approval to MoDOT before beginning work. Material submittals and subcontractor list will be sent to james.long@modot.mo.gov.

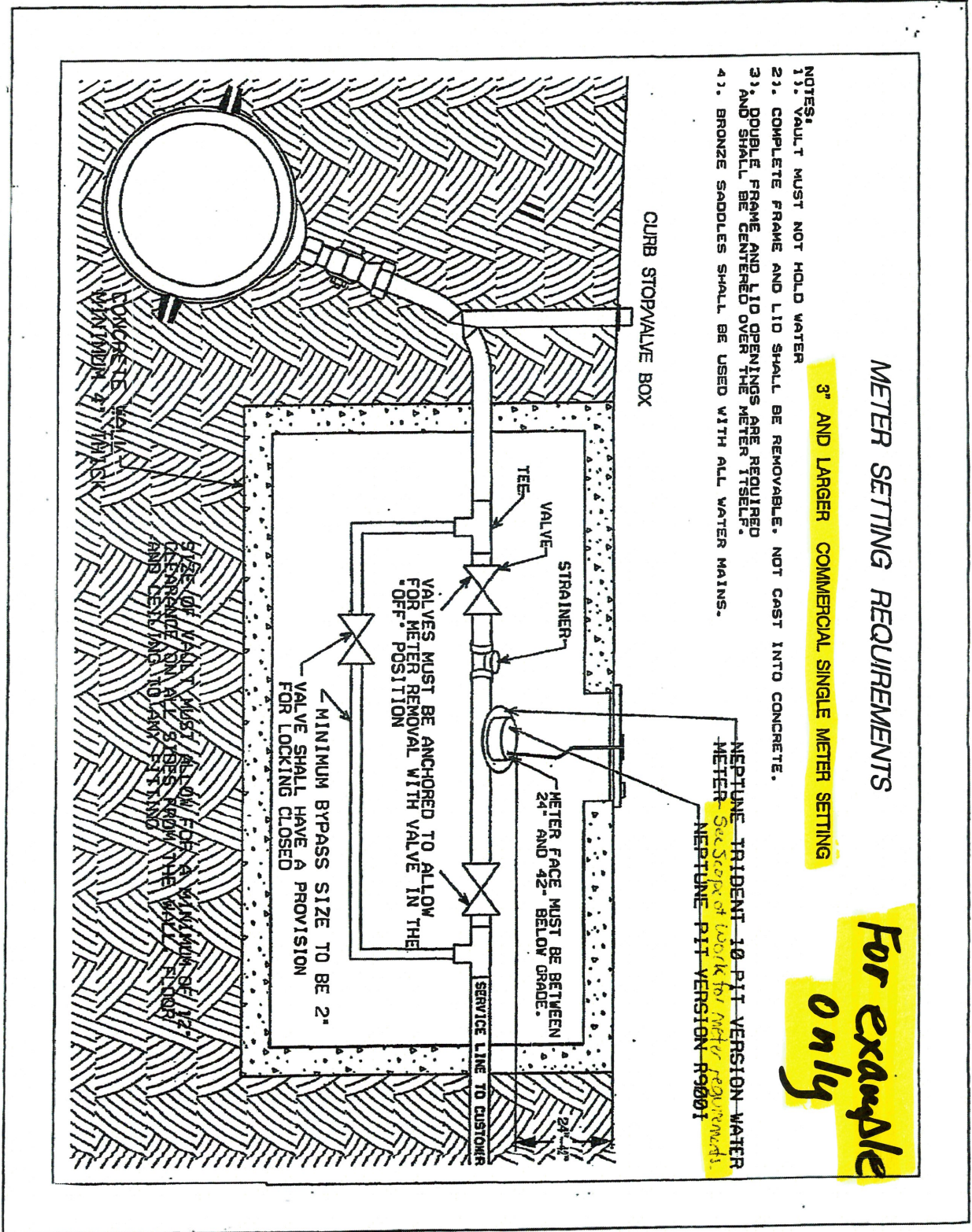
The Contractor is responsible for disposal of all waste materials and providing graded groundwork at worksite. The Contractor shall seed and mulch any areas affected by excavation/ groundwork after installation of meter.

Work will begin at a date to be announced after bid award. Notice To Proceed will be issued promptly after the receipt and of all required documents, the materials list, a subcontractor list, work plans, etc., with the goal of beginning at completing the project as soon as possible. All work must be finished no later than September 11, 2026.

All work subject to inspection and shall be approved by MoDOT and City of New Florence before issuance of payment. Payment will be made at the completion of the project and acceptance of work. No partial payments will be made.

Direct Inquiries about this scope of work to Jim Long, MoDOT Northeast District Facilities Manager (573-719-7397 / james.long@modot.mo.gov). Direct questions about the bid documents, terms, and solicitation response processes to Bill Noyes, MoDOT Northeast District Senior Procurement Agent (660-385-8245 / william.noyes@modot.mo.gov).

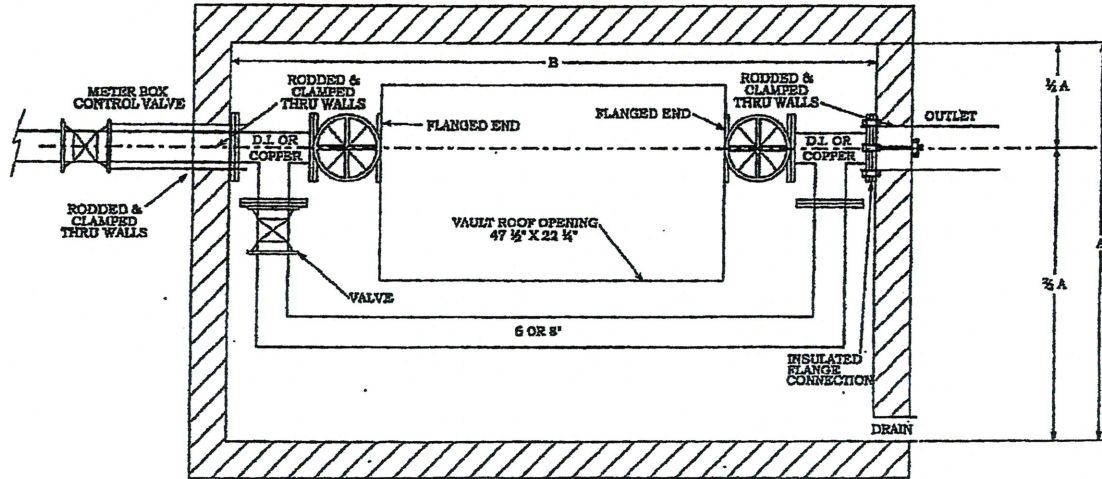
The below drawing is a representative example of the type of meter pit set up required for this project. If there are discrepancies/conflicts in the items shown in the drawing and the written Scope of Work, the requirements of the written Scope of Work take precedence.



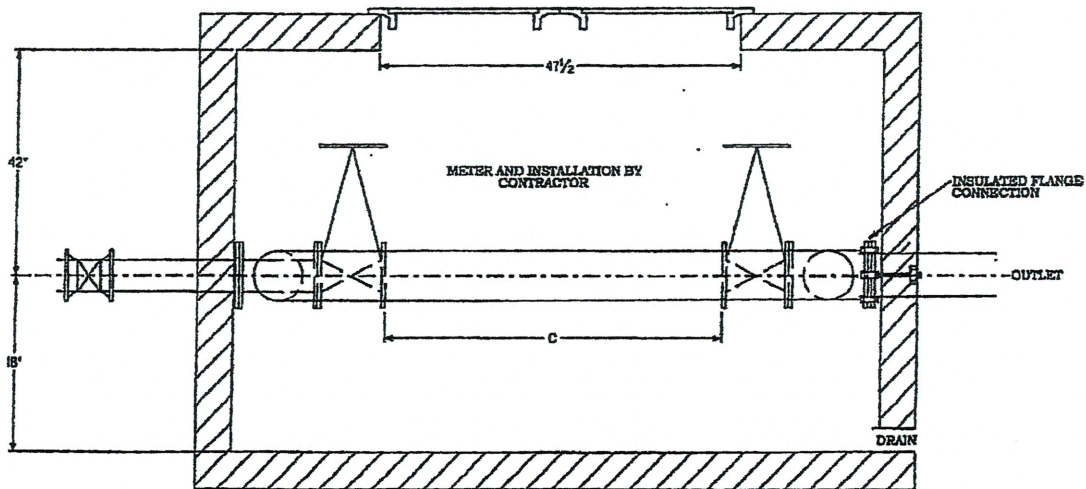
The below drawing is a representative example of the type of meter pit set up required for this project. If there are discrepancies/conflicts in the items shown in the diagram and the written Scope of Work, the requirements of the written Scope of Work take precedence.

3" AND LARGER COMMERCIAL SINGLE METER SETTING

For example only



PLAN



ELEVATION

SERVICE IN.	SIZE		MIN. DIM. IN.		
	BYPASS	MIN. IN.	A	B	C
6	6	60	144	60	
8	8	50	144	66	
3	2	48	102	54	
4	2	48	102	54	