



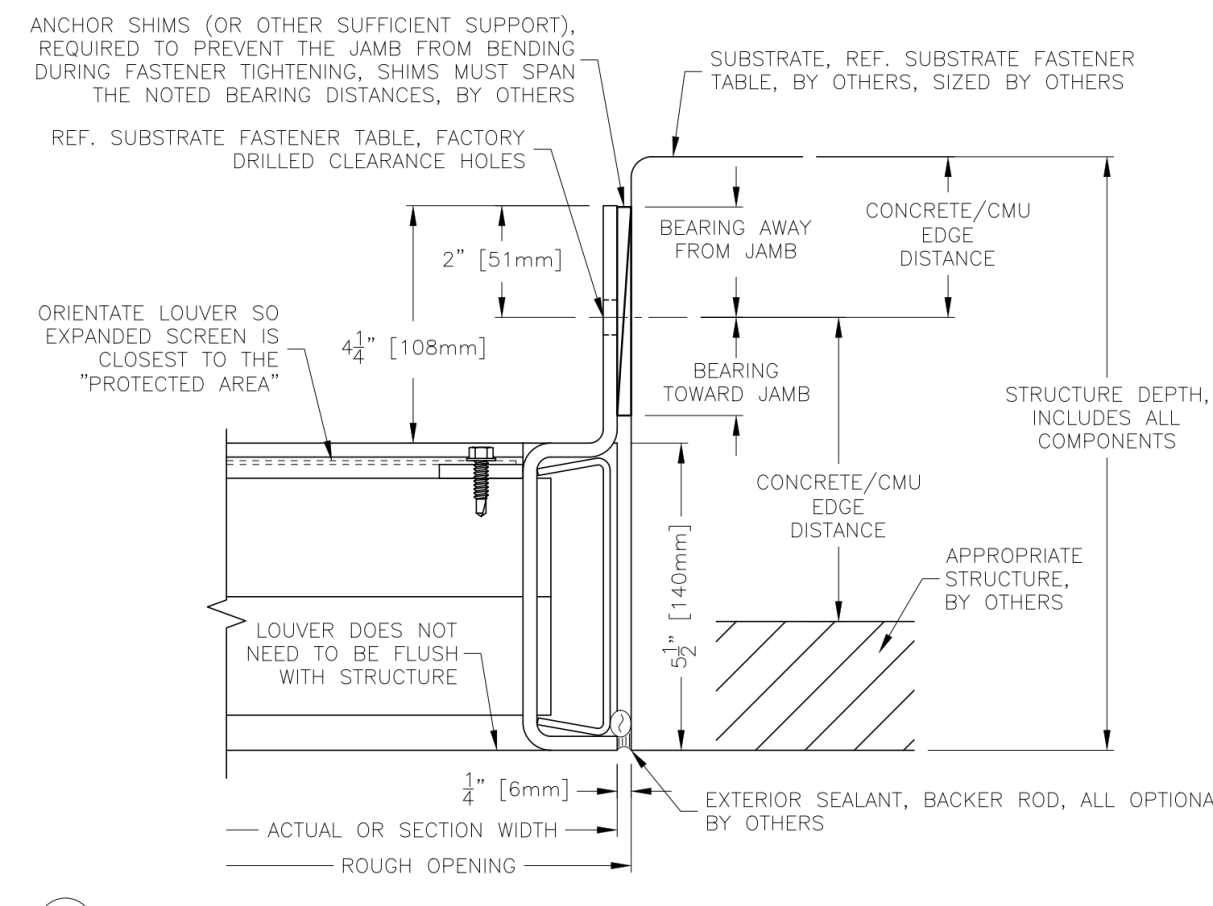
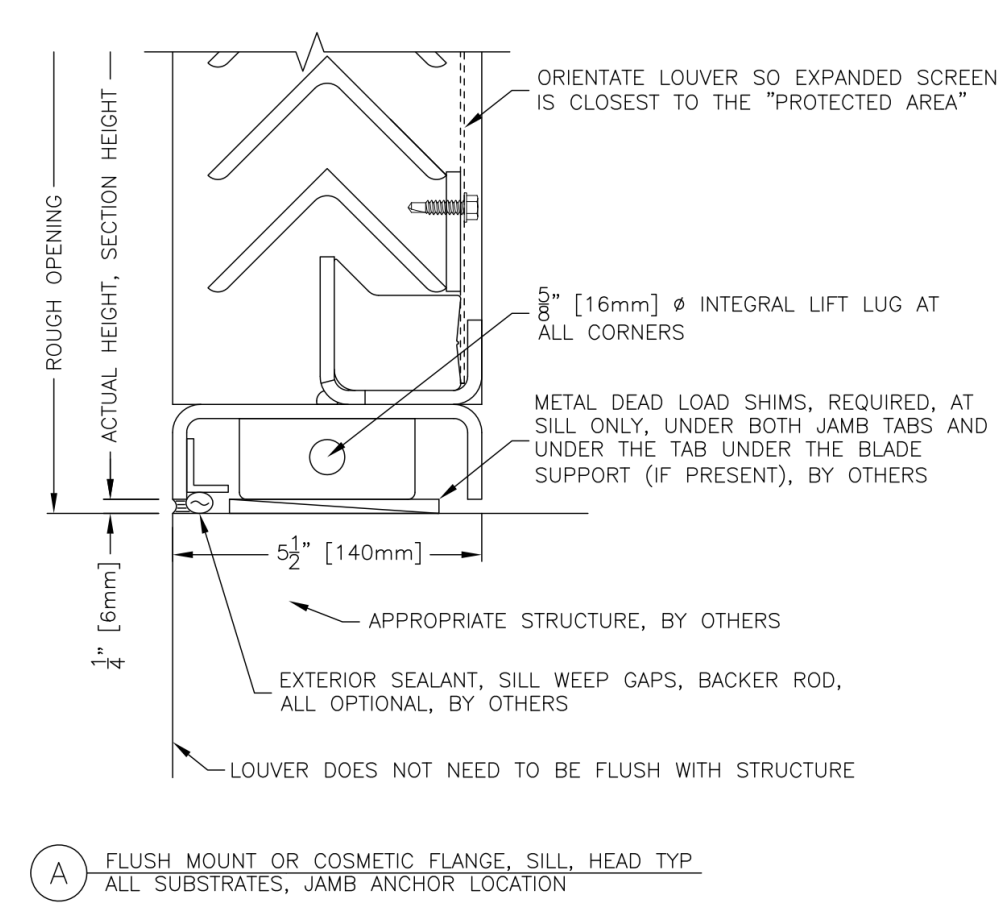
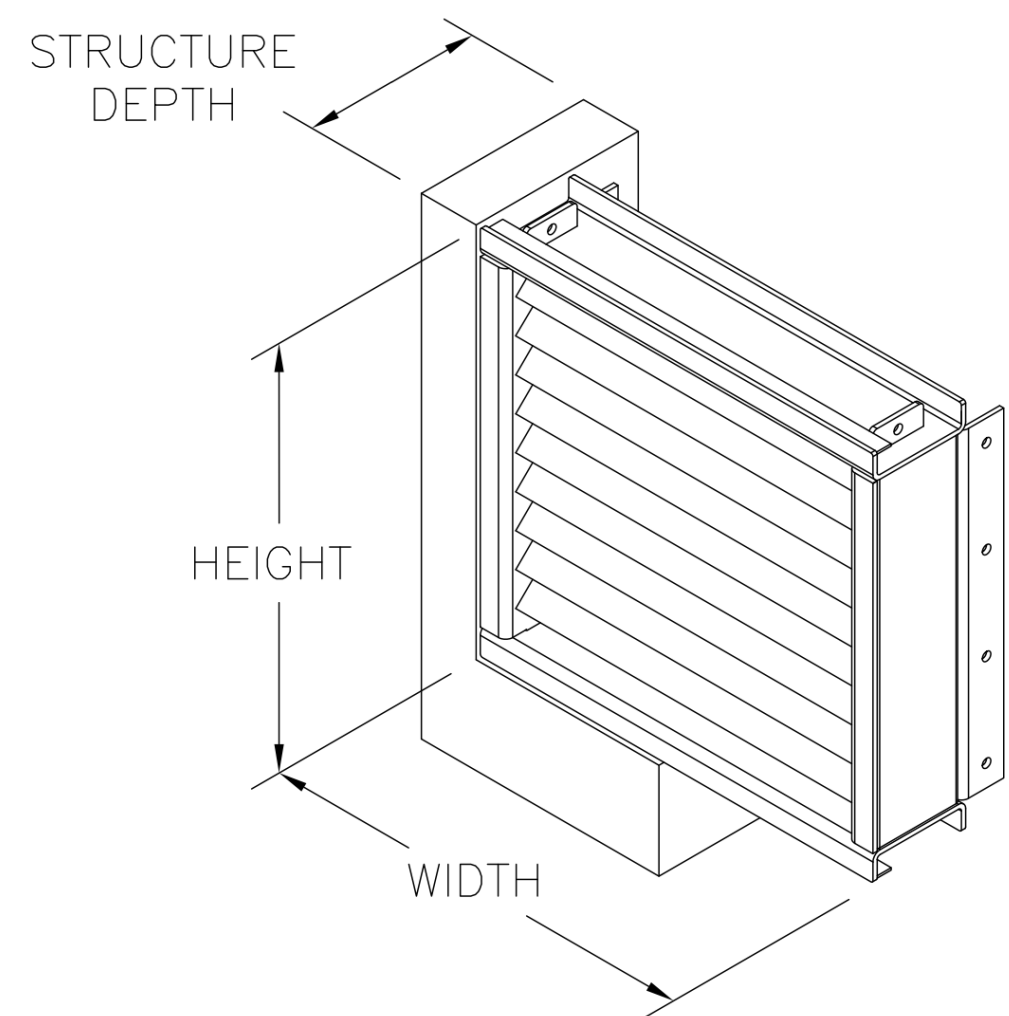
Allen & Hoshall
engineers • architects • surveyors

Allen & Hoshall, PLLC
Architect, Michael Label
1661 International Drive, Suite 100 Memphis, TN 38120
901 820 0820 fax 866 270 6330

© ALLEN & HOSHALL
This document is proprietary and shall not be reproduced or used by others without prior written consent. These drawings are intended to be plotted in color. Contractor assumes all risk in utilizing these drawings in any other manner.



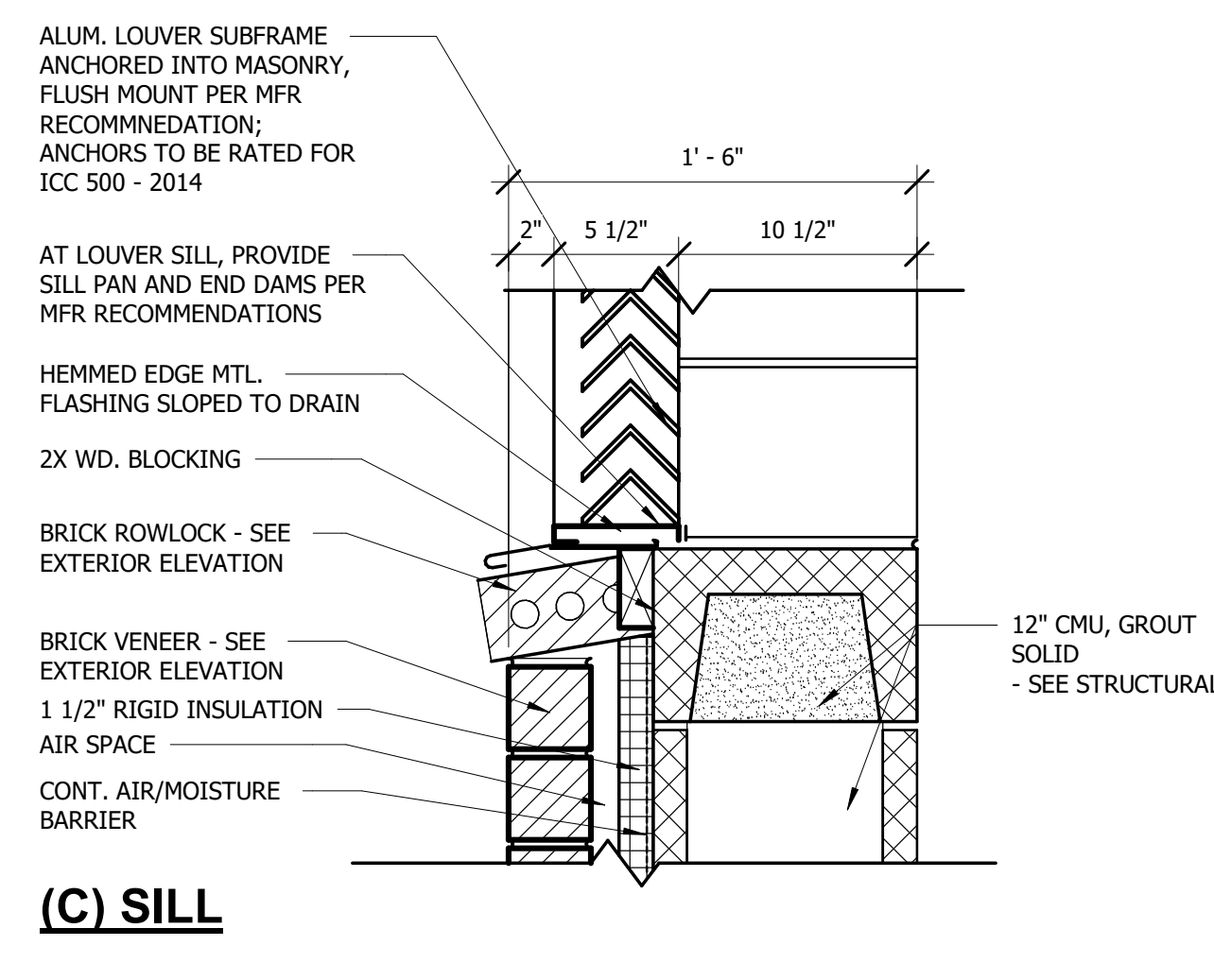
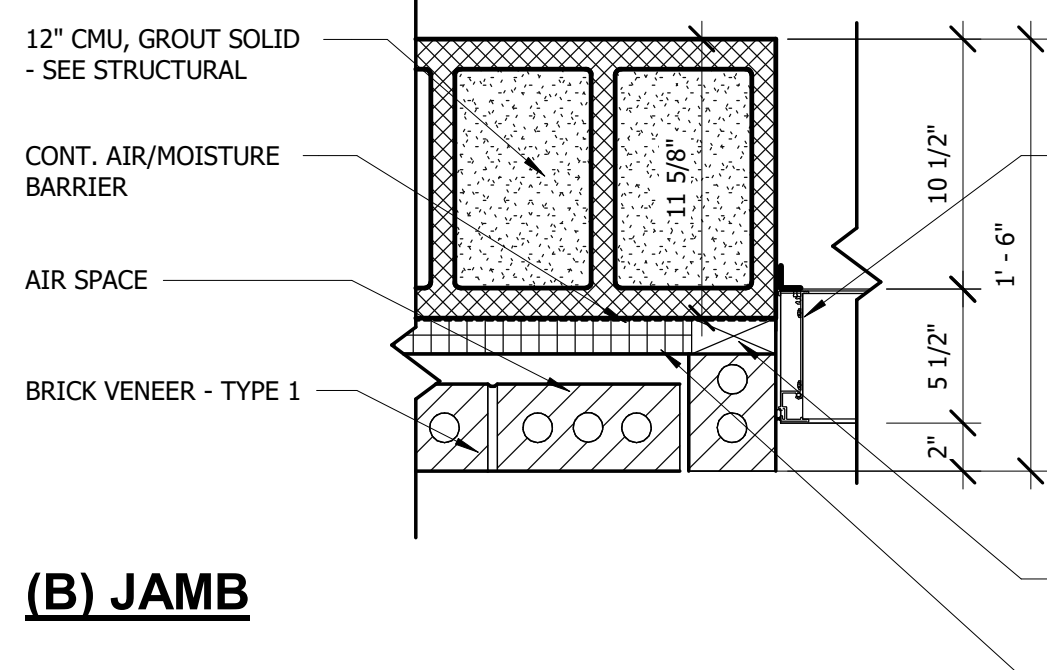
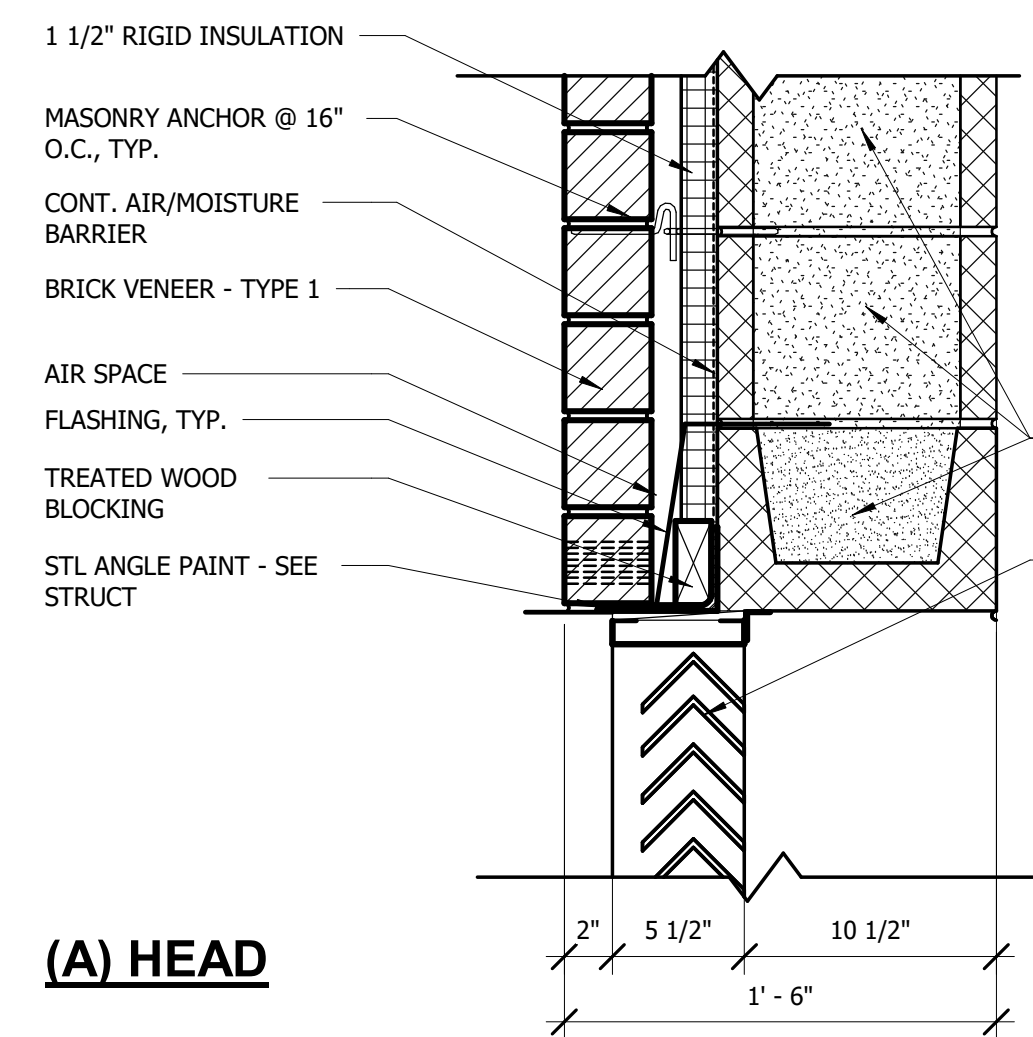
STANDARD ANCHOR LOCATION: JAMBS



DETAIL B1 AND B2 SUBSTRATE FASTENER TABLE: FLUSH MOUNT OR COSMETIC FLANGE, JAMB ANCHOR LOCATION					
SUBSTRATE	MIN EDGE, MIN BEARING NEAR ANCHOR	CENTERS	MIN EMBEDMENT	MIN STRUCTURE DEPTH, INCLUDES ALL COMPONENTS	OTHER
GROUT FILLED CMU	3/8" [92mm] MIN BEARING TOWARD AND AWAY FROM JAMB	6" [152mm]	4 1/4" [108mm]	12" [305mm], IF DEPTH IS LESS THAN MIN THEN SECONDARY MOUNTING ANGLE IS REQUIRED (REF. DETAIL C)	EDGE DISTANCE OF 3/8" [92mm] MIN IN ONE DIRECTION AND 7/8" [194mm] MIN IN ALL OTHER DIRECTIONS. JAMB SUBSTRATE LEG MUST BE FULLY BACKED BY SUBSTRATE OR OTHER SUFFICIENT SUPPORT OVER NOTED BEARING DISTANCES
	1/2" [13mm] Ø DEWALT SCREW-BOLT+, BY OTHERS				
GROUT FILLED CMU SUBSTRATE REQUIREMENTS: -FULLY GROUTED CMU, 1.5 KSI [10.3 MPA] MIN COMPRESSIVE STRENGTH. -CMU BLOCK MIN: 8x8x16" [203x203x406mm] NOM, GRADE N, LIGHT OR NORMAL OR MED-WEIGHT, TYPE II, CONFORMS TO ASTM C90. -GROUT MIN: COMPRESSIVE STRENGTH OF AT LEAST EQUAL TO ITS SPECIFIED STRENGTH BUT MIN OF 2 KSI [13.8 MPA] AS TESTED PER ASTM C1019, OR ALTERNATIVELY PER SEC 3.2.2 OF ICC-ES REPORT ESR-4042.					

1 LOUVER DETAILS

1/4" = 1'-0"



NOTE: FOR EXTERIOR WALL LOUVERS LOCATED IN CLASSROOMS B15 & B16 AND MECHANICAL ROOMS B15B & B16B.

2 LOUVER DETAILS - STORM SHELTER

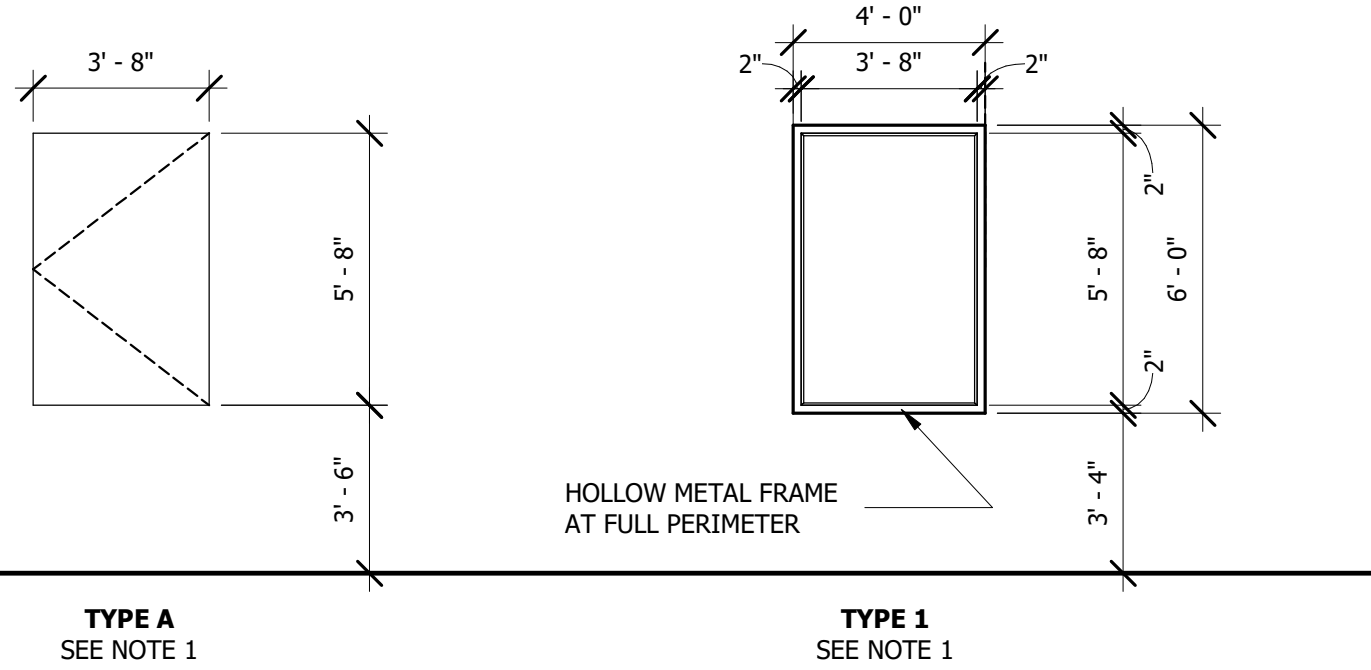
1 1/2" = 1'-0"

SHUTTER TYPES

SCALE: 1/4" = 1'
NOTE: REFERENCE KEYNOTE 10 - AX.X

SHUTTER FRAME TYPES

SCALE: 1/4" = 1'
NOTE: REFERENCE KEYNOTE 10 - AX.X



STORM SHUTTER & STORM SHUTTER FRAME TYPES

1/4" = 1'-0"

STORM SHUTTER SCHEDULE										
Type Mark	ROOM LOCATION	LOCATION	WIDTH	HEIGHT	SHUTTER TYPE	SHUTTER FINISH	FRAME TYPE	FRAME FINISH	HARDWARE	COMMENTS
E	WORKOUT SPACE 119	INTERIOR SIDE OF WINDOW TYPE A1	3' - 8"	5' - 8"	TYPE A - SEE NOTE 1	PAINT	TYPE 1 - SEE NOTE 1	PAINT	SEE NOTE 1	REFERENCE KEYNOTE 11 - SHEET A1.1
E	WORKOUT SPACE 119	INTERIOR SIDE OF WINDOW TYPE A1	3' - 8"	5' - 8"	TYPE A - SEE NOTE 1	PAINT	TYPE 1 - SEE NOTE 1	PAINT	SEE NOTE 1	REFERENCE KEYNOTE 11 - SHEET A1.1
E	WORKOUT SPACE 119	INTERIOR SIDE OF WINDOW TYPE A1	3' - 8"	5' - 8"	TYPE A - SEE NOTE 1	PAINT	TYPE 1 - SEE NOTE 1	PAINT	SEE NOTE 1	REFERENCE KEYNOTE 11 - SHEET A1.1
E	WORKOUT SPACE 119	INTERIOR SIDE OF WINDOW TYPE A1	3' - 8"	5' - 8"	TYPE A - SEE NOTE 1	PAINT	TYPE 1 - SEE NOTE 1	PAINT	SEE NOTE 1	REFERENCE KEYNOTE 11 - SHEET A1.1
E	WORKOUT SPACE 119	INTERIOR SIDE OF WINDOW TYPE A1	3' - 8"	5' - 8"	TYPE A - SEE NOTE 1	PAINT	TYPE 1 - SEE NOTE 1	PAINT	SEE NOTE 1	REFERENCE KEYNOTE 11 - SHEET A1.1
E	WORKOUT SPACE 119	INTERIOR SIDE OF WINDOW TYPE A1	3' - 8"	5' - 8"	TYPE A - SEE NOTE 1	PAINT	TYPE 1 - SEE NOTE 1	PAINT	SEE NOTE 1	REFERENCE KEYNOTE 11 - SHEET A1.1

NOTES:
NOTE 1: STORM SHUTTER SHALL BE EQUAL TO THE FOLLOWING AND UL LISTED TO MEET ICC 500 FOR TORNADO SHELTER USE:
1. 3/4" STORMPRO SHUTTER - CECO/ASSA ABLOY FULLY TESTED ASSEMBLY.
2. SHUTTER - 1 3/4" SINGLE LEAF, 14 GA, A60 GALVANNEALED
3. LOCK - CORBIN RUSSWIN F66700 SERIES OR SARGENT FM6100 SERIES AS UL TESTED WITH ASSEMBLY WITH MULTI-POINT LATCHING - INSIDE PASSAGE FUNCTION
4. HINGES - FULL MORTISE BUTT HINGES (4 PER LEAF) MCKINNEY SP5786 4 1/2"x4 1/2"x 1.80
5. DOOR HOLDER - ROCKWOOD 494S MECHANICAL HOLDER (THRU-BOLT MOUNTING OF BODY TO DOOR ONLY) WALL TO DOOR
6. 4 SIDED FRAME - 2" (4" HEAD) X 5 3/4" FRAME DEPTH. 14 GA A60 GALVANNEALED WITH FULLY WELDED CORNERS. FULLY GROUTED FRAMES WITH WIRE OR T ANCHORS INSTALLED PER MANUF INSTRUCTIONS AND UL LISTING FOR ICC 500. PREPARE FRAME FOR HARDWARE.
7. FOR STORM SHUTTER ANCHOR DETAILS - SEE DETAILS 4/10.2

StormPro 361 Assembly Anchoring - Pairs

Head Anchoring Method - Welded Pipe Spacer with 3/8" Powers Lok Bolt AS
Jamb Anchoring Method - Welded Pipe Spacer with 3/8" Powers Lok Bolt AS

OPENING SIZE	"A" DIMENSION	MIN. # OF JAMB ANCHORS
UP TO AND INCLUDING 7070	24" MAX. ON CENTER	4
OVER 7070 AND UP TO AND INCLUDING 8070	21" MAX. ON CENTER	4
OVER 8070 AND UP TO AND INCLUDING 8080	21" MAX. ON CENTER	5

Jamb anchor locations may vary provided that the spacing on either side of each jamb anchor does not exceed dimension "A" in table above, distance from bottom corners does not exceed 8", and distance from top corners does not exceed 4". Head anchors shall be provided as shown. Anchors may have up to 1/4" maximum load bearing shim.
Signed and sealed anchor calculations available upon request.

CURRIES ASSA ABLOY Experience a safer and more open world	JOB NO.	PROJECT	SHEET NO. OF
		LOCATION	

3 DOUBLE H.M. DOOR FRAMES - HEAD & JAMB ANCHOR DETAILS - STORM SHELTER

1/4" = 1'-0"

StormPro 361 Assembly Anchoring - Single

Head Anchoring Method - Welded Pipe Spacer with 3/8" Powers Lok Bolt AS
Jamb Anchoring Method - Welded Pipe Spacer with 3/8" Powers Lok Bolt AS
Design Pressure +/- 284 psf

OPENING SIZE	"A" DIMENSION
UP TO AND INCLUDING 3070	21" MAX. ON CENTER
OVER 3070 AND UP TO AND INCLUDING 4080	18" MAX. ON CENTER

Jamb anchor locations may vary provided that the spacing on either side of each jamb anchor does not exceed dimension "A" in table above, distance from bottom corners does not exceed 8", and distance from top corners does not exceed 4". Head anchors shall be provided as shown. Anchors may have up to 1/4" maximum load bearing shim.
Signed and sealed anchor calculations available upon request.

Ceco Door ASSA ABLOY Experience a safer and more open world	JOB NO.	PROJECT	SHEET NO. OF
		LOCATION	

4 SINGLE HM DOOR FRAME & WINDOW SHUTTER-ANCHOR DETAILS-STORM SHELTER

1/4" = 1'-0"

CAREER TECHNICAL CENTER - WEST ADDITION

1005 Kuykendall Ln, Horn Lake, MS 38637

DESOTO COUNTY SCHOOLS

No.	Revision Description	Date

LOUVER & SHUTTER DETAILS

JOB NO: 63742
DATE: 05.21.26
DRAWN: Author
BID SET

A10.4

Plotted on: 5/27/2026 9:29:01 AM