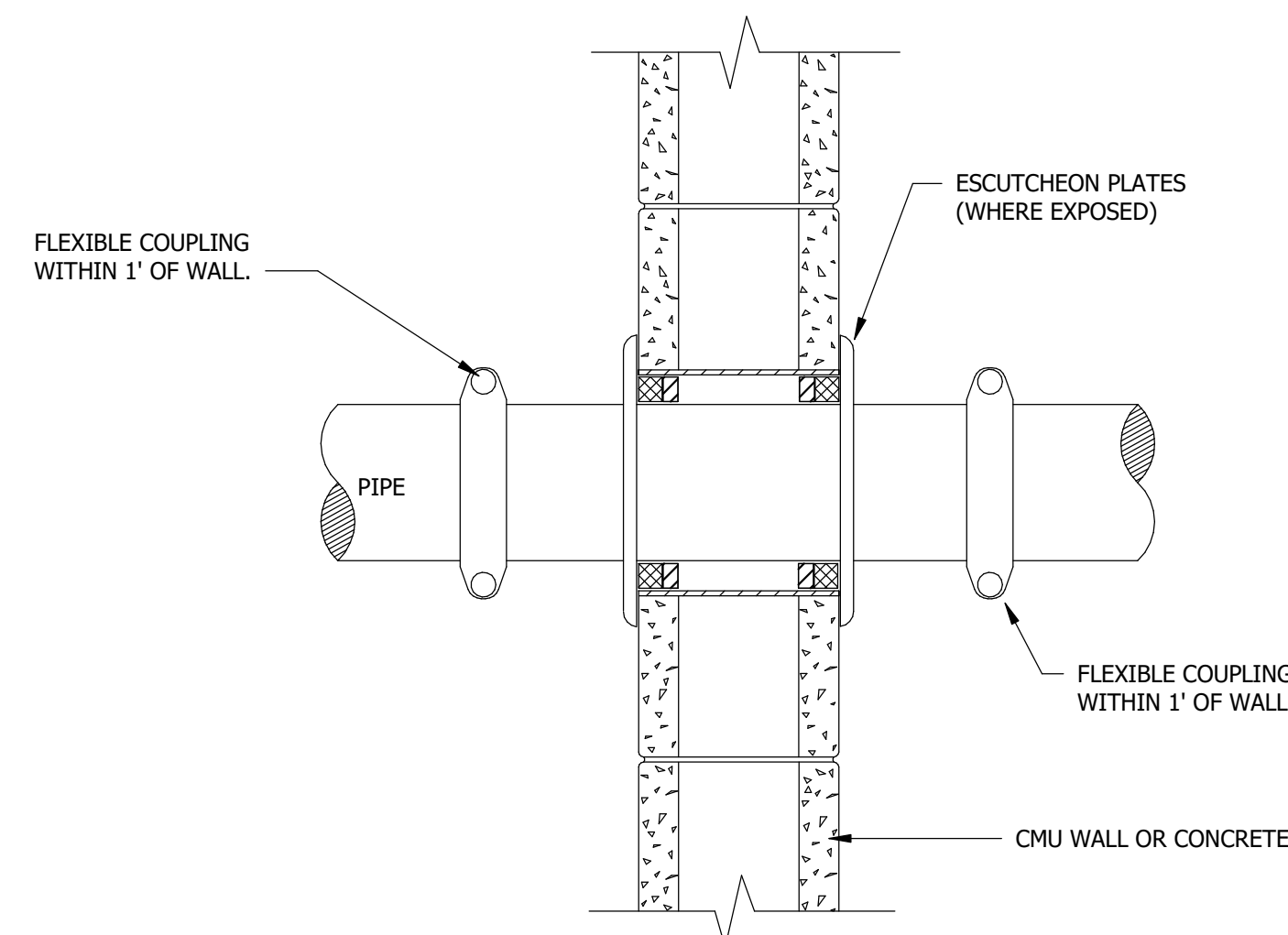


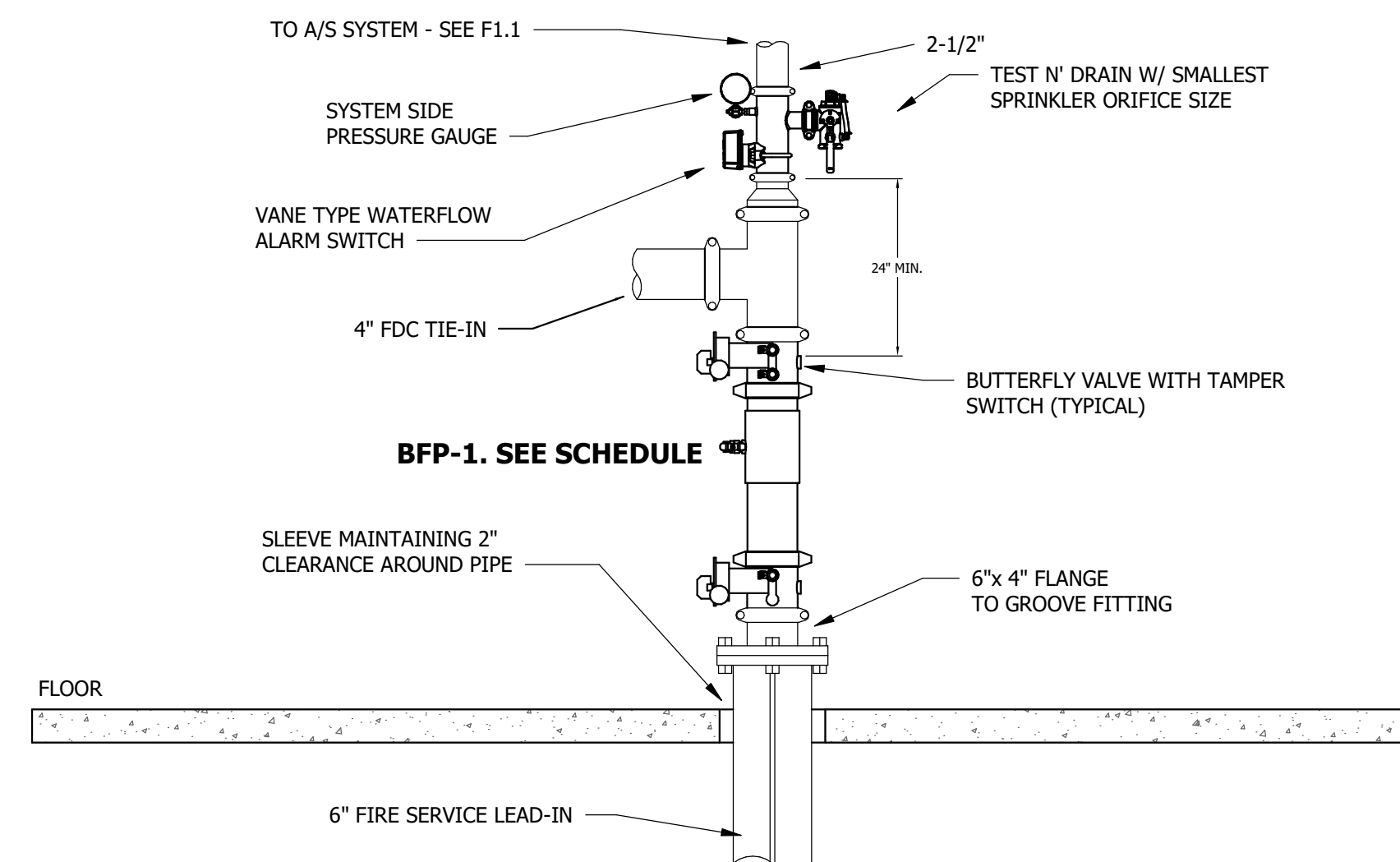
Allen & Hoshall  
engineers • architects • surveyors

Allen & Hoshall, PLLC  
Architect, Michel Lebel  
1661 International Drive Memphis, TN 38120  
901 820 0820 fax 866 270 6330

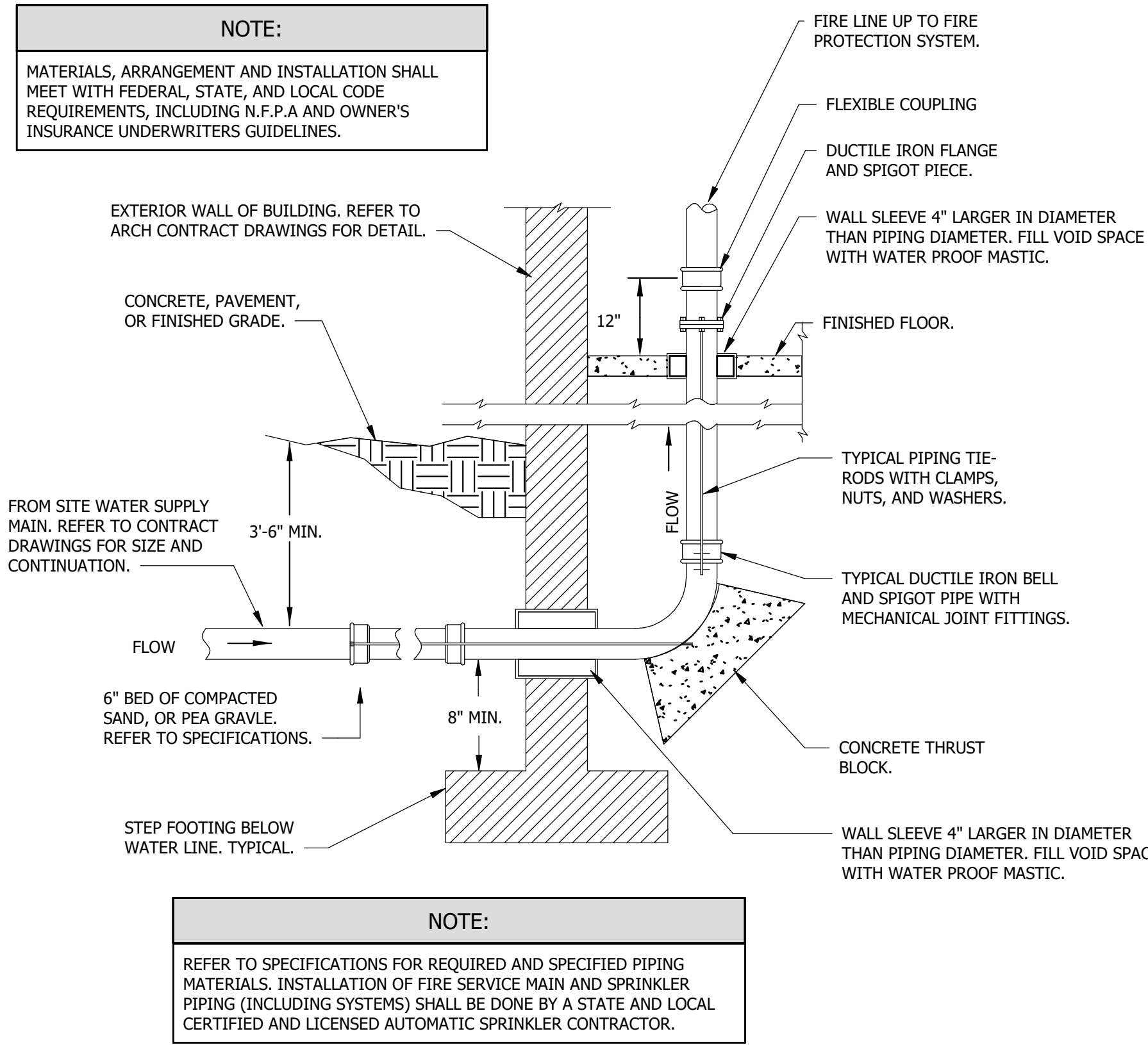
© ALLEN & HOSHALL  
This document is proprietary and shall not be reproduced or used by others without prior written consent. These drawings are intended to be plotted in color. Contractor assumes all risk in utilizing these drawings in any other manner.



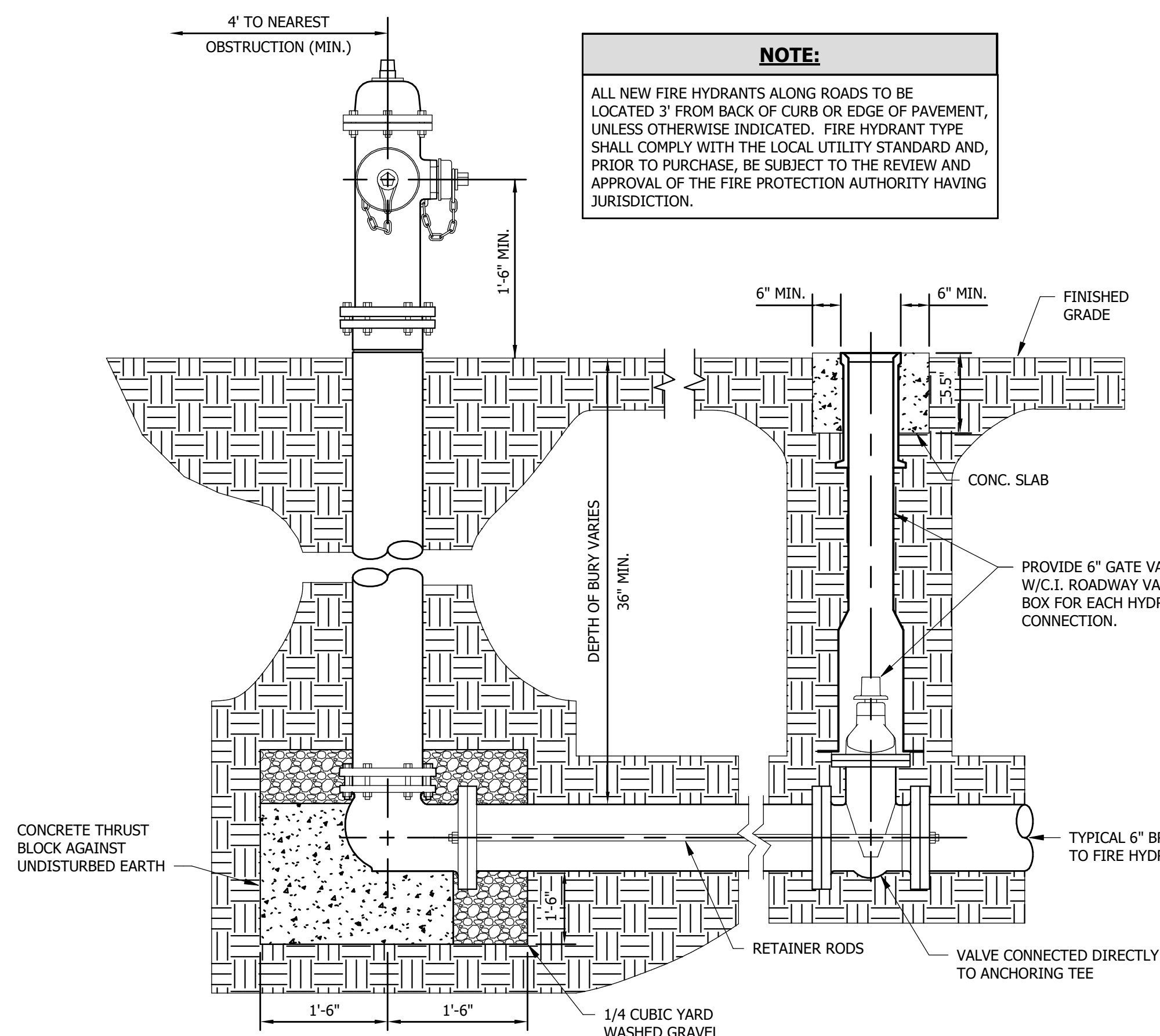
1 NON-FRANGIBLE WALL PENETRATION  
1/8" = 1'-0"



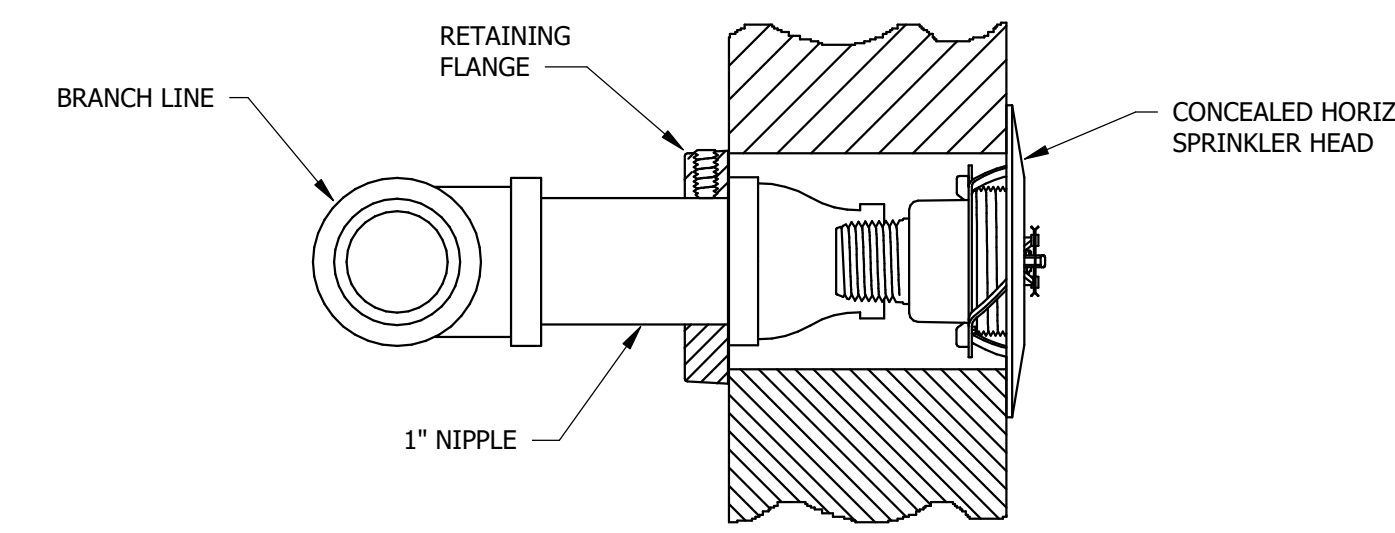
2 WET RISER WITH BACKFLOW DETAIL  
1/8" = 1'-0"



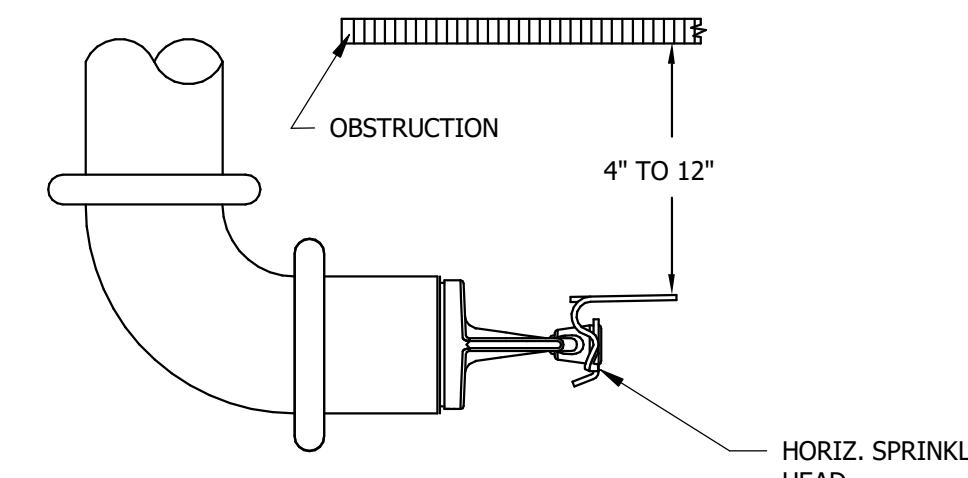
3 SPRINKLER MAIN SPIGOT DETAIL  
1/8" = 1'-0"



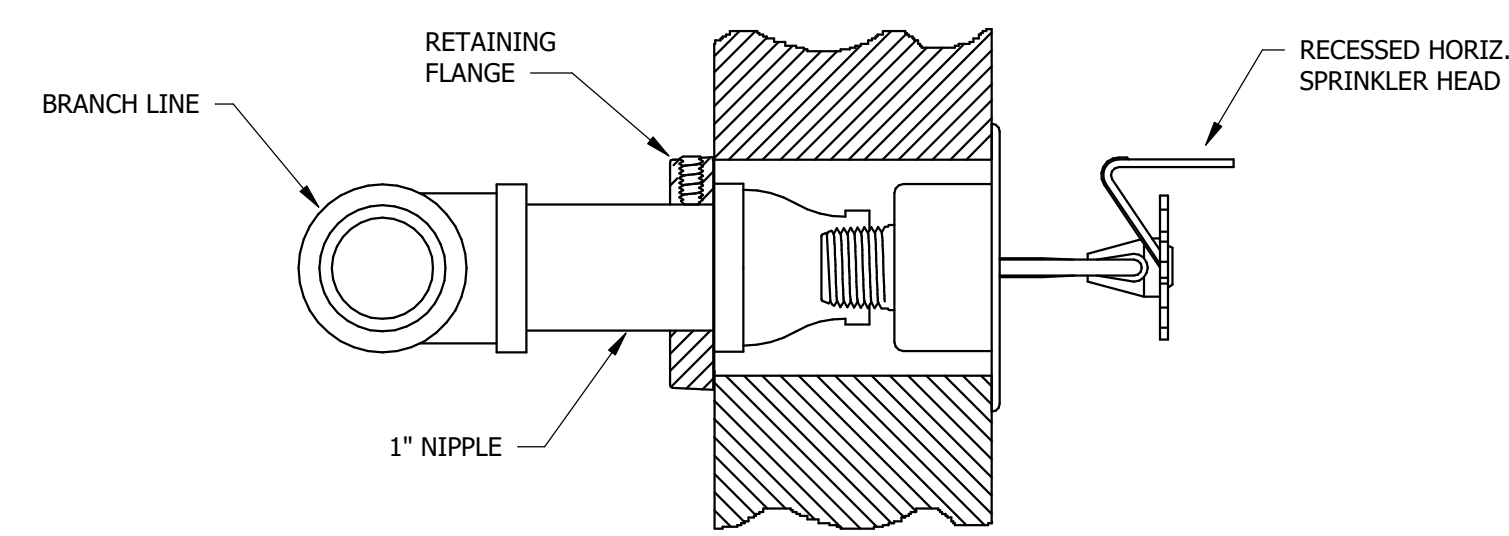
4 FIRE HYDRANT DETAIL  
1/8" = 1'-0"



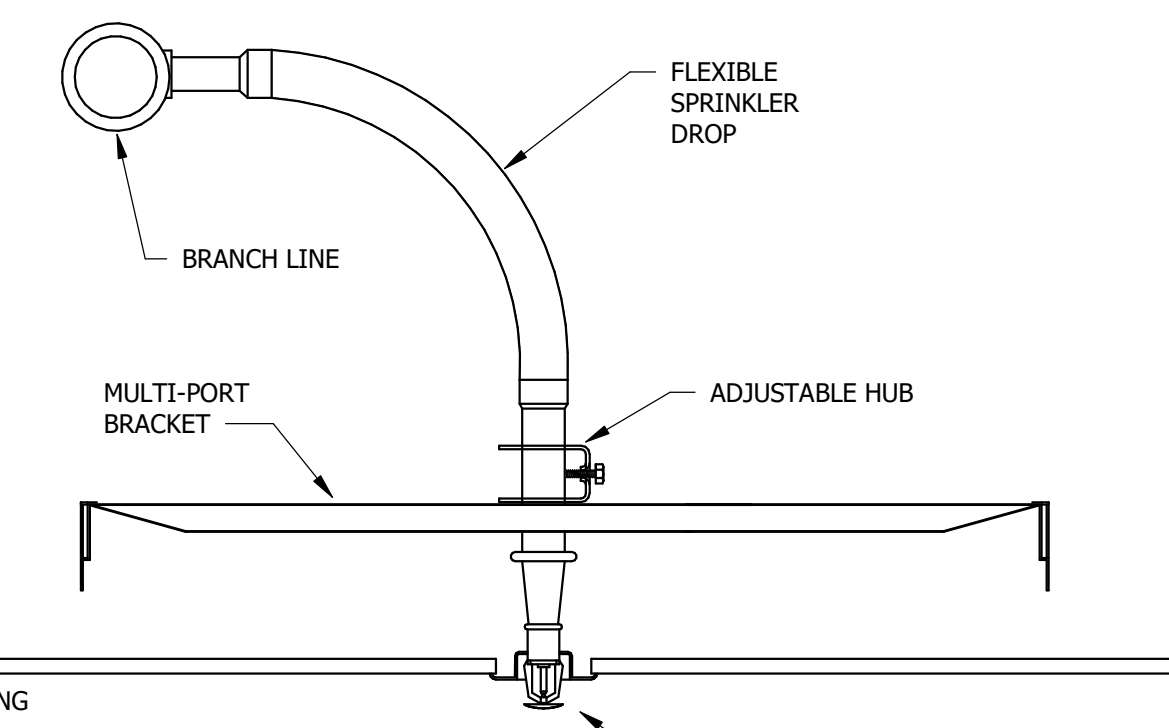
TYPICAL CONCEALED SIDEWALL HEAD



TYPICAL SIDEWALL HEAD UNDER OBSTRUCTION

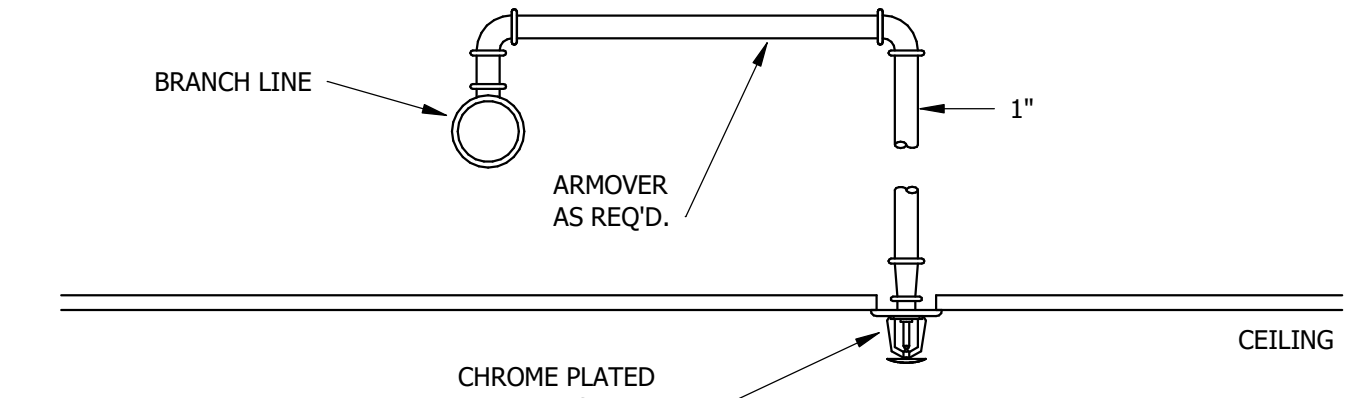


TYPICAL RECESSED SIDEWALL HEAD

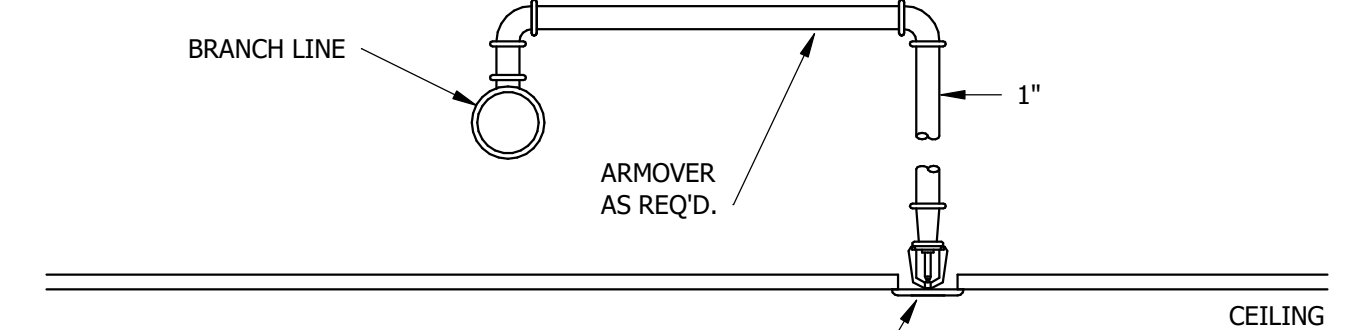


TYPICAL RECESSED HEAD WITH FLEXIBLE CONNECTION

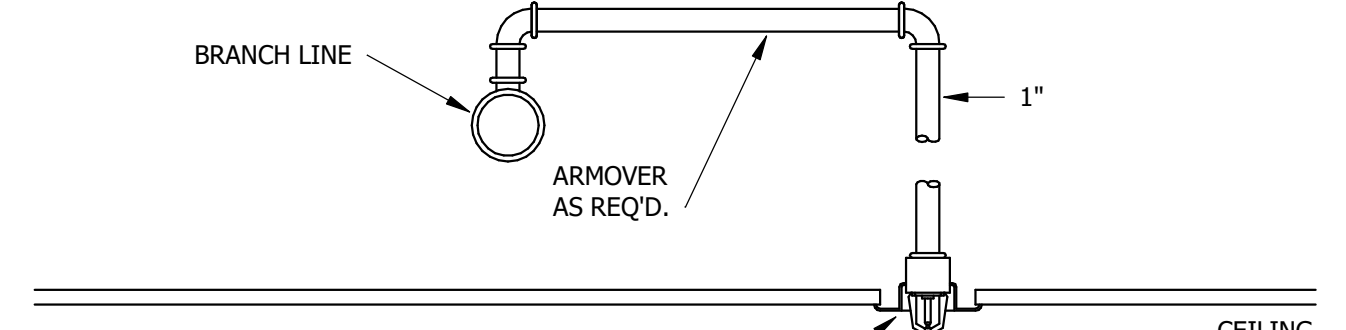
NOTE:  
INSTALLATION AND MATERIALS SHALL MEET WITH THE REQUIREMENTS OF THE OWNER'S INSURANCE UNDERWRITER.



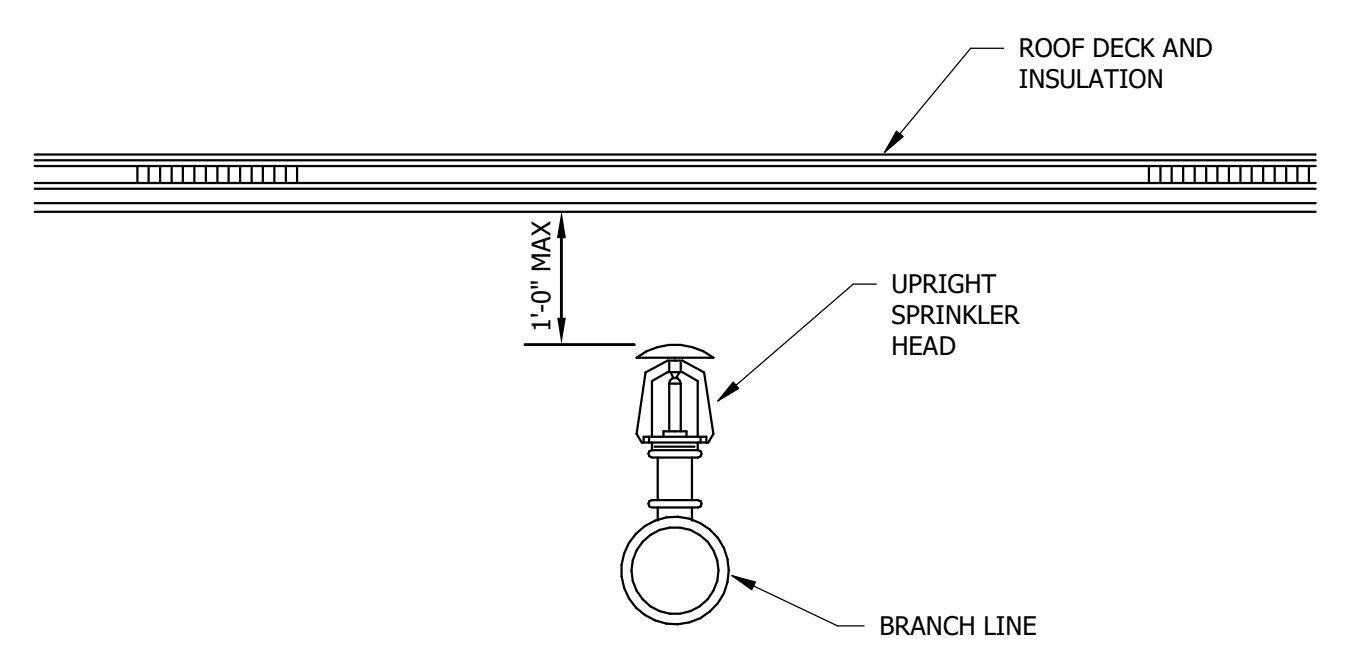
TYPICAL STANDARD PENDENT HEAD



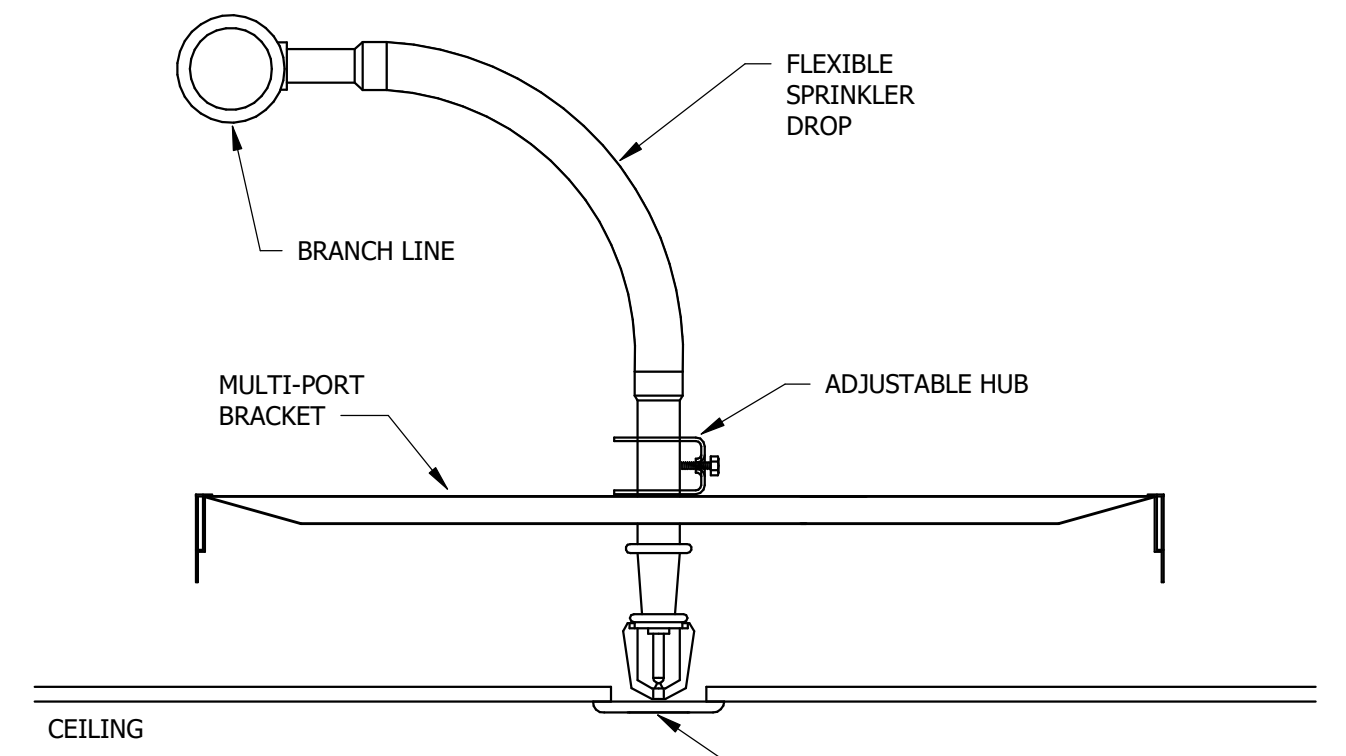
TYPICAL CONCEALED HEAD



TYPICAL RECESSED HEAD



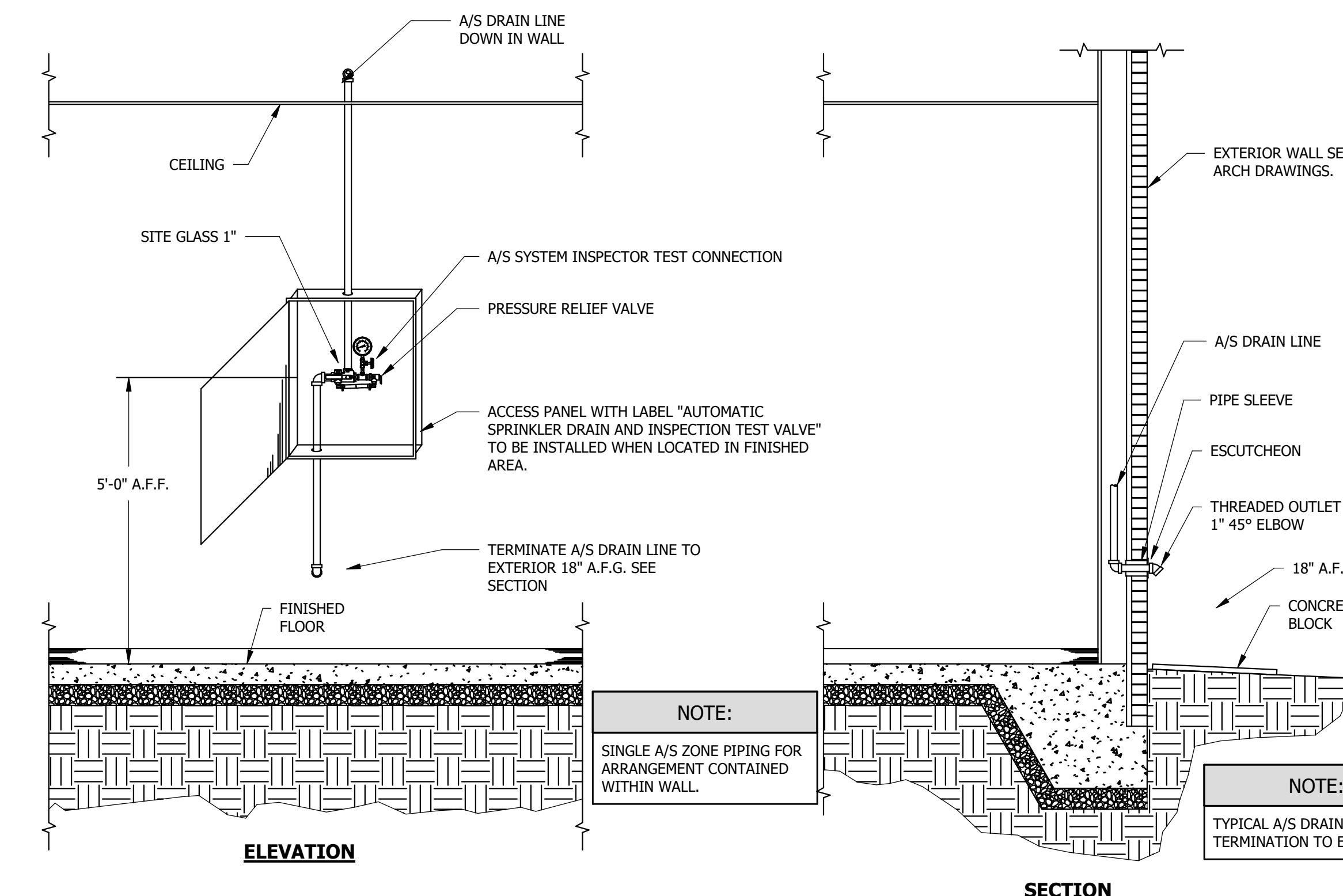
TYPICAL UPRIGHT HEAD



TYPICAL CONCEALED HEAD WITH FLEXIBLE CONNECTION

NOTE:  
INSTALLATION AND MATERIALS SHALL MEET WITH THE REQUIREMENTS OF THE OWNER'S INSURANCE UNDERWRITER.

5 SPRINKLER HEAD INSTALLATION DETAILS  
1/8" = 1'-0"



6 TEST AND DRAIN CONNECTION DETAIL  
1/8" = 1'-0"

CAREER TECHNICAL CENTER - WEST ADDITION

1005 Kuykendall Ln, Horn Lake, MS 38637

DESOTO COUNTY SCHOOLS

No.	Revision Description	Date

DETAILS

JOB NO: 63742  
DATE: 05.21.26

DRAWN: ART  
BID SET

F5.1