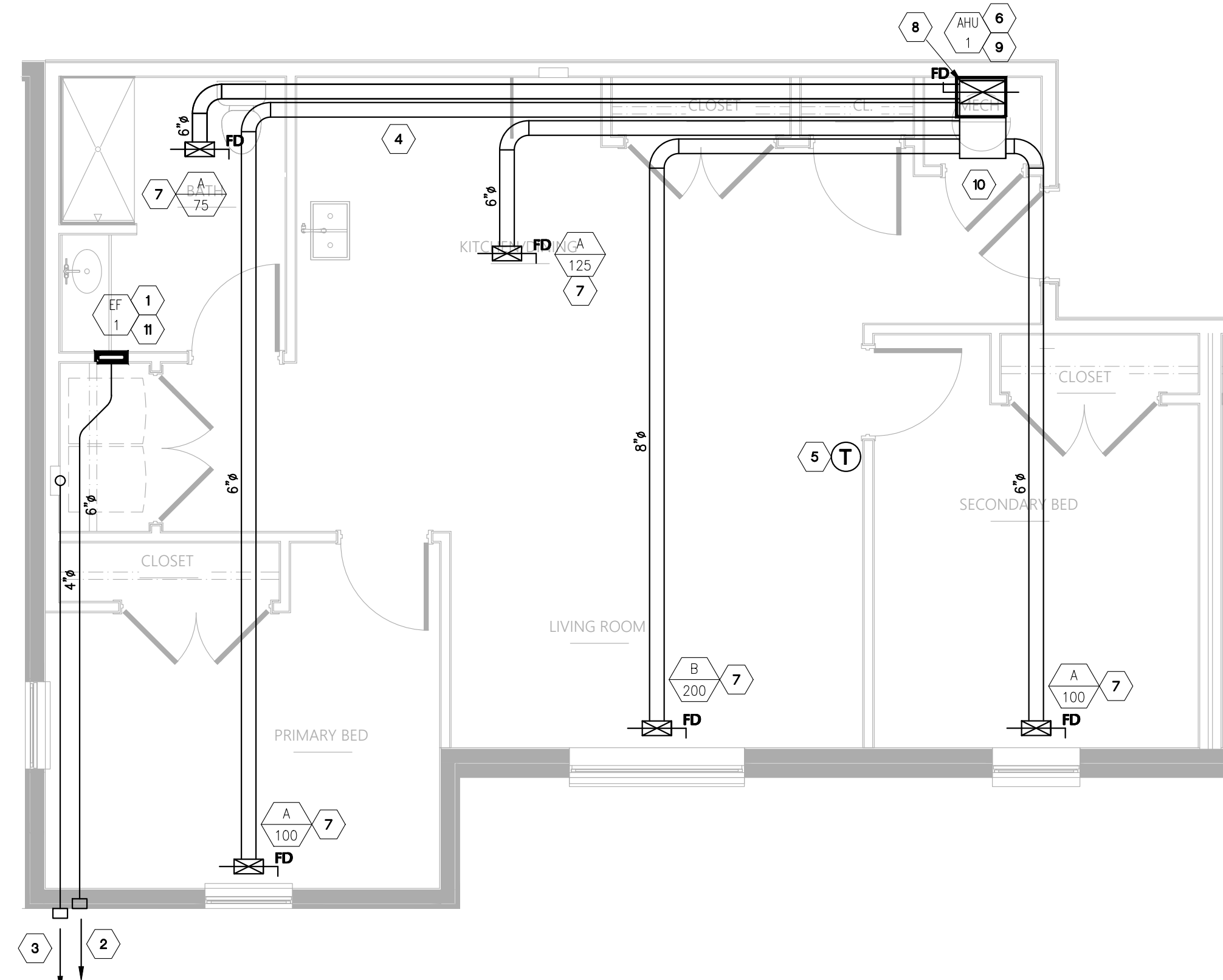
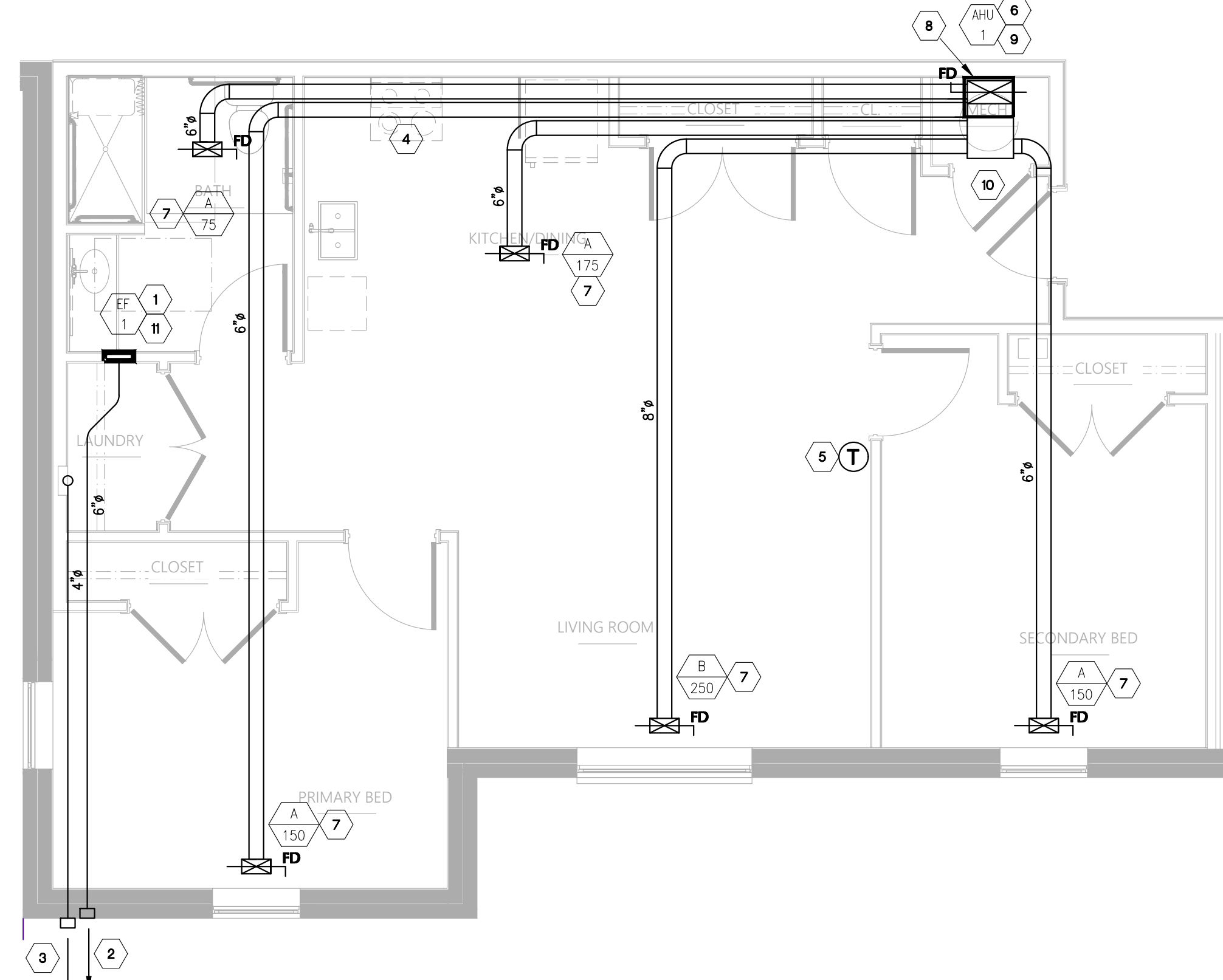


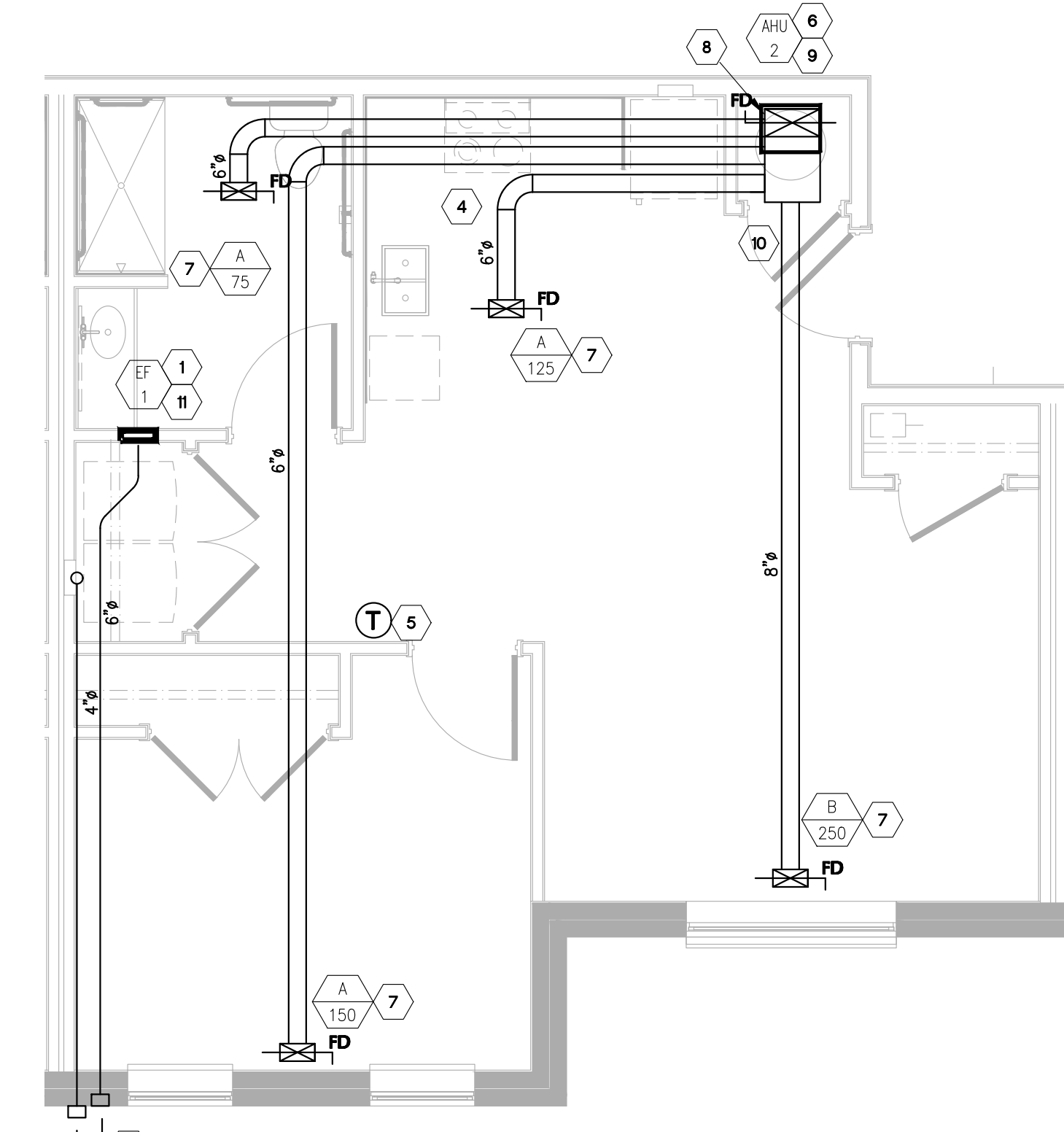
THIS DRAWING OR PARTS THEREOF IS THE EXCLUSIVE PROPERTY OF Work A+D. AND MAY NOT BE USED OR REPRODUCED IN ANY FORM, BY ANY METHOD, FOR ANY PURPOSE WITHOUT PRIOR WRITTEN CONSENT FROM Work A+D.



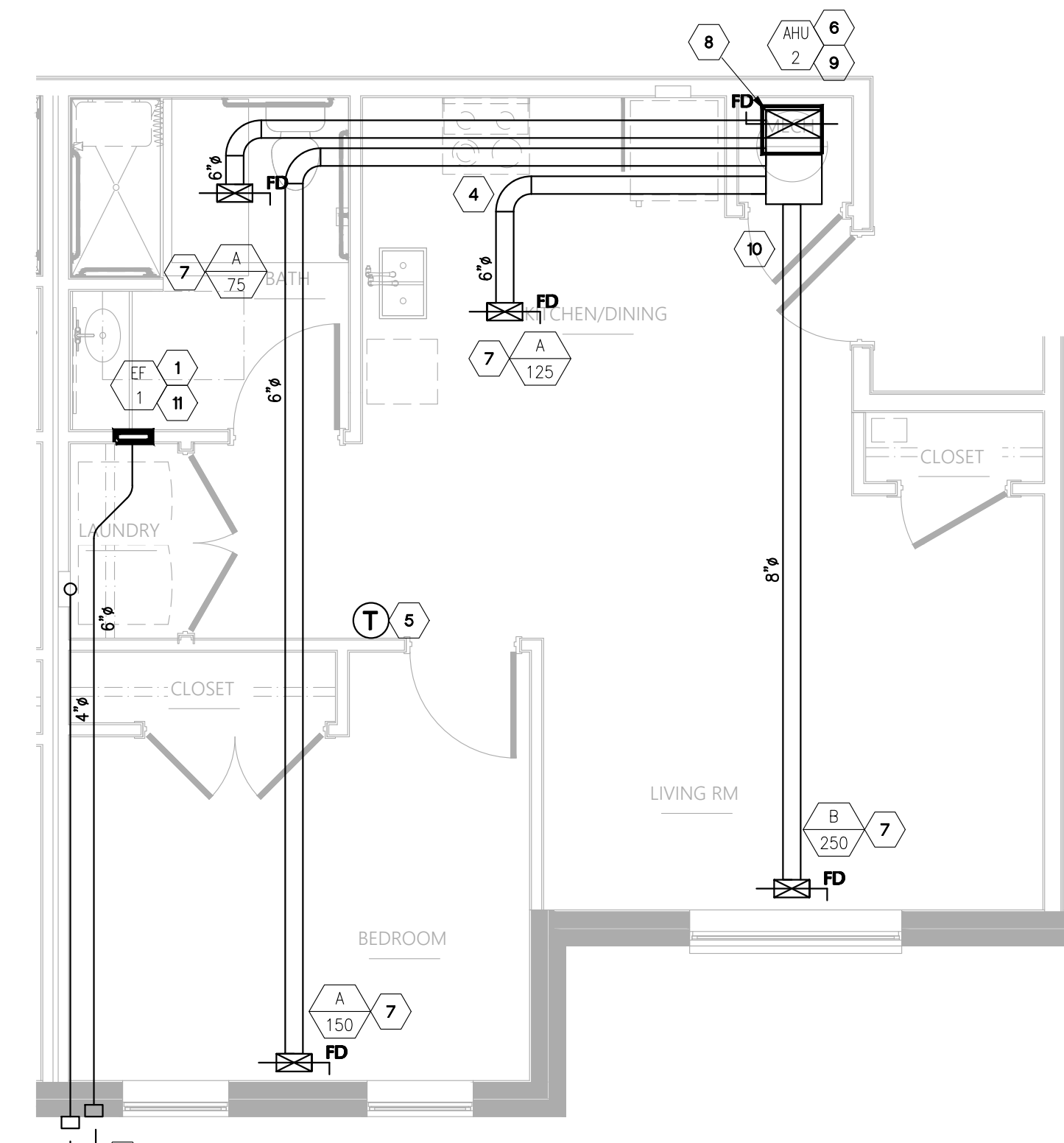
01 2BR FLOOR PLAN - MECHANICAL
1/4" = 1'-0"



01 2BR FLOOR PLAN ACC - MECHANICAL
1/4" = 1'-0"



01 1BR FLOOR PLAN - MECHANICAL
1/4" = 1'-0"



01 1BR FLOOR PLAN ACC - MECHANICAL
1/4" = 1'-0"

VENTILATION MATRIX PER ASHRAE 62.2 - SECTION 4.1.1			
ROOM TYPE	SQ. FT.	# BEDROOMS	VENTILATION
			QTOT CALCULATION TOTAL VENT RATE
1BR UNIT	649	1	34
2BR UNIT	921	2	50
1BR UNIT ACC	649	1	34
2BR UNIT ACC	921	2	50
1BR UNIT W/ DEN	822	1	40

DESIGN: ALL UNITS CONTAIN (1) EF-1, 2-SPEED FAN WITH A CONTINUOUS VENTILATION RATE OF 50 CFM.

MECHANICAL SHEET NOTES:

1. PROVIDE NEOPRENE FLEXIBLE CONNECTION AT DUCT CONNECTIONS ON OUTLET OF EXHAUST FANS. TRANSITION FROM 4" OVAL DUCT CONNECTION TO 6" AT CEILING.
2. RR EXHAUST FAN TERMINATION AT WALL WITH EXHAUST BRICK VENT SIMILAR TO GREENHECK EYE. PAINT TO MATCH EXTERIOR AND COORDINATE WITH ARCH ON COLOR. COORDINATE LOCATION WITH ARCHITECTURAL DRAWINGS.
3. DRYER VENT TERMINATION HOOD. DRYER DUCT SHALL BE 4" RIGID DUCT DRYER DUCTWORK, MINIMUM 27 GAUGE STEEL, FIRE CAULK CEILING PENETRATION. ROUTE DUCT ABOVE CEILING IN A 1-HR RATED ENCLOSURE TO THE EXTERIOR PER IMC 2018. PROVIDE WITH BACKDRAFT DAMPER. COORDINATE LOCATION WITH ARCHITECTURAL DRAWINGS.
4. RECIRCULATING FAN ON MICROWAVE OVEN WITH ACTIVATED CHARCOAL FILTER, 200 CFM MINIMUM, AND ENERGY STAR RATING PROVIDED BY OTHERS.
5. 24/7 PROGRAMMABLE THERMOSTAT TO BE FURNISHED AND INSTALLED BY M.C. THERMOSTAT TO BE MOUNTED AT 48" A.F.F. TO HIGHEST CONTROL.
6. MOUNT AHU TO WALL. SEE DETAIL ON M3.1 AND AHU SPECS FOR DETAILS ON MOUNTING.
7. AIR REGISTER MOUNTED IN 1-HR RATED CEILING TO BE INSTALLED WITH RADIATION DAMPER PER BUILDING CODE.
8. S.A. DUCT PENETRATION THROUGH RATED CEILING TO BE EQUIPPED WITH RADIATION DAMPER.
9. ROUTE CONDENSATE TO FLOOR DRAIN IN MECHANICAL CLOSET.
10. MECHANICAL CLOSET TO HAVE LOUVERED DOOR FOR RETURN AIR.
11. CONTRACTOR OPTION/ TOP FLOOR APARTMENTS, ROUTE RR EXHAUST FAN TERMINATION THROUGH ROOF. MAINTAIN 10 FT DISTANCE FROM OUTDOOR AIR INTAKES. EXHAUST TERMINATION TO BE SIMILAR TO GREENHECK RCC-7 WITH ROOF CURB.

GENERAL NOTES:

1. MECHANICAL CONTRACTOR TO PROVIDE P.V.C SPLIT INSULATION JACK FOR ALL EXPOSED REFRIGERANT PIPING. PIPING SHALL BE BUNDLED. INSULATION JOINTS SHALL BE CEMENTED.
2. RESTROOM EXHAUST DUCT TO RUN IN CEILING. COORDINATE LOCATION OF DUCT WITH ARCHITECTURAL DRAWINGS TO PRESERVE SOUND AND FIRE RATINGS.
3. ALL SYSTEMS TO HAVE ENERGY STAR DESIGNATION.
4. ALL EXTERIOR VENTING WHERE VISIBLE TO ALIGN WITH OTHER VENTS HORIZONTALLY AND VERTICALLY.
5. SYSTEMS SHALL BE TESTED IN ACCORDANCE WITH ASHRAE 62.2.
6. MAINTAIN A MINIMUM OF 10 FT. BETWEEN O.A. INTAKE HOODS AND EXHAUST TERMINATIONS.
7. PROVIDE ALL OUTDOOR AND EXHAUST AIR HOODS/BRICK VENTS WITH BIRD SCREENS AND BACKDRAFT DAMPERS.
8. LOCATE ALL DUCT AS HIGH IN CEILING CAVITY AS POSSIBLE, PARTICULARLY ROUND DUCTWORK SERVING INTAKE AND EXHAUST TERMINATIONS.
9. RECTANGULAR DUCTWORK IN APARTMENTS SHALL BE CONSTRUCTED OF SHEET STEEL NOT LESS THAN NO. 26 GAGE THICKNESS TO COMPLY WITH IBC EXEMPTION FOR FIRE DAMPER THROUGH A-1 HOUR WALL.
10. COORDINATE DUCT ROUTING WITH FRAMING CONTRACTOR.
11. DUCTWORK IN THE ATTIC SPACE ON TOP FLOORS TO BE INSULATED TWICE.
12. ROUND DUCTWORK TO BE FLEX DUCT WHERE APPLICABLE. REFER TO SPECS FOR INSTALL.
13. ALL DUCTWORK (SUPPLY, RETURN, EXHAUST AND OUTDOOR AIR) SHALL BE INSULATED PER SPEC BOOK REQUIREMENTS.

James E. Forst & Associates, Inc.
Mechanical and Electrical Engineers
1165 East Broadway
Louisville, Kentucky 40204
PH: (502) 584-4033
FAX: (502) 585-3665

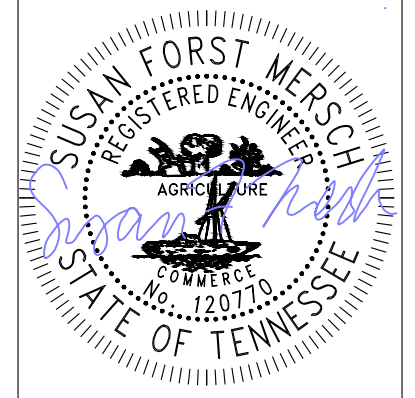
CONTRACTOR SHALL NOT DEVIATE FROM CONSTRUCTION DOCUMENTS WITHOUT ENGINEER'S APPROVAL. ANY CHANGES SHALL BE SUBMITTED WITH MATERIAL, LABOR AND REASON FOR DEVIATION. ANY CHANGES MADE WITHOUT ENGINEER'S REVIEW AND APPROVAL SHALL BE AT THE CONTRACTOR'S EXPENSE.

JAMES E. FORST AND ASSOCIATES JOB NUMBER: #23-169
ALL DRAWINGS AND WRITTEN MATERIALS APPEARING HEREIN CONSTITUTE ORIGINAL AND UNPUBLISHED WORK OF THE ENGINEERS AND MAY NOT BE REPRODUCED, USED OR DISCLOSED WITHOUT WRITTEN CONSENT OF THE ENGINEERS.

THE EQUIPMENT ROUGH-IN ITEMS AND THEIR DIMENSIONED LOCATIONS FOR ALL CONNECTIONS ARE ACCURATE TO THE BEST OF OUR KNOWLEDGE AND SHALL BE VERIFIED WITH THE EQUIPMENT SUPPLIER, OWNER AND/OR THE EQUIPMENT ROUGH-IN DRAWINGS. IN SOME INSTANCES, THE OWNER OR SUPPLIER MAY MAKE SUBSTITUTIONS OR THE EQUIPMENT ITEM MAY VARY FROM WHAT IS SHOWN. THEREFORE, THE ARCHITECT/ENGINEER SHALL BE IMMEDIATELY NOTIFIED, PRIOR TO CONSTRUCTION OF ANY DEVIATIONS FROM WHAT IS SHOWN OR IMPLIED IN THESE DRAWINGS. FAILURE OF THE APPROPRIATE CONTRACTOR TO VERIFY ROUGH-IN OR THEIR LOCATIONS SHALL PLACE THE RESPONSIBILITY FOR ANY SUBSEQUENT RELOCATION AND/OR ADDITIONAL ROUGH-IN DIRECTLY UPON THE CONTRACTOR.

WORK
ARCHITECTURE + DESIGN
Louisville, KY Northern, KY
Information
502.652.3232 @WRKarc.com

S.O.C.A.Y.R. INC
1244 S 4th St. Louisville, KY 40203



MECHANICAL ENLARGED
FLOOR PLANS
1577 Rock Springs Rd.
Smyrna, TN 37167

02.16.2024
SUBMISSION DATE

BEA2304

M2.1

PERMIT
DRAWINGS

MULTI-FAMILY NEW CONSTRUCTION
BEA2304 SMYRNA, TN

